

## Targus ThumbPad™

Portable Keyboard for Palm™ m125



### **USER'S GUIDE**

*Making Your Mobile Life Easier.*

# ThumbPad™ Portable Keyboard

Congratulations on your purchase of the Targus ThumbPad™ Portable Keyboard. The ThumbPad is a convenient and ultra-portable keyboard for your mobile computer.

With the ThumbPad keyboard you can:

- Enter text directly into your mobile computer.
- Use the function (Fn) keys to quickly execute commands and options.
- Use the cursor and space keys to play games on your mobile computer.
- Take a keyboard with you whenever you travel with your mobile computer.

In addition to this user's guide, this package contains the Targus ThumbPad Portable Keyboard and the keyboard driver software CD.

## Installing the Keyboard Driver

Before installing the driver software for the ThumbPad keyboard, make sure that:

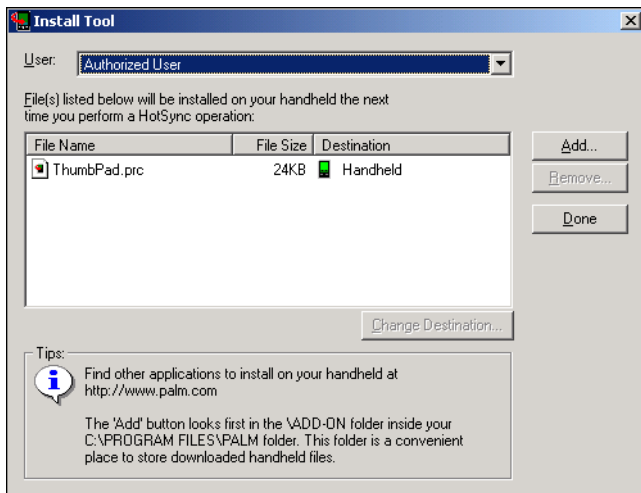
- You synchronize your mobile computer to back up your files.
- You disable any previously installed keyboard software.
- Your mobile computer has at least 24K bytes of free memory.

### Windows® Operating Systems

To install the driver for the ThumbPad keyboard on a computer with the Windows® 95/98/Me/2000 or Windows NT® 4.0 operating system, do the following:

- 1 Insert the keyboard driver software CD into your computer's CD-ROM drive.
- 2 Click **Start**, **Run**, then enter D:\ThumbPad.prc (where D: is the path of your CD-ROM drive) and then click **OK**.

The Install Tool program then installs the driver software. When installation is complete, the Install Tool window appears.



*Sample Install Tool window*

- 3 Click **Done**.
- 4 To exit the Install Tool program, click **OK**.
- 5 Connect your mobile computer to your desktop or notebook computer and synchronize to copy the keyboard driver to your mobile computer.

After synchronization, the ThumbPad keyboard icon appears in the Applications screen on your mobile computer.

To complete installation, reset your mobile computer.

## Macintosh® Operating System

To install the driver software for the ThumbPad keyboard on a computer with the Macintosh 8.5.1 or greater operating system, do the following:

- 1 Exit all active programs, including those in the Startup folder, and disable any virus-scanning software.
- 2 Insert the keyboard driver software CD into your computer's CD-ROM drive.

The ThumbPad keyboard application folder is added to your desktop.



**NOTE:** You may find it more convenient to drag the **ThumbPad.prc** file into the folder where you store your mobile computer applications, such as the Add-on folder.

- 3 Double-click the **ThumbPad.prc** file to launch the Install Tool program.

Installation automatically begins. When it is complete, you regain control of the Install Tool window.

- 4 Click **Done**.
- 5 To exit the Install Tool program, click **OK**.
- 6 Connect your mobile computer to your desktop or notebook computer and synchronize to copy the keyboard driver to your mobile computer.

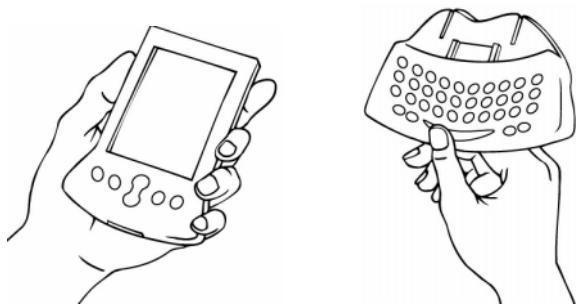
After synchronization, the ThumbPad keyboard icon appears in the Applications screen on your mobile computer.

To complete installation, reset your mobile computer.

## Connecting the Keyboard to Your Mobile Computer

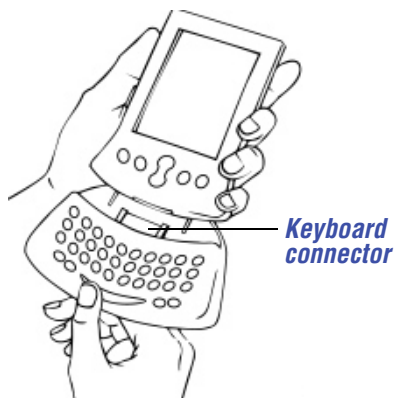
After installing the keyboard driver, you can connect the ThumbPad keyboard to your mobile computer. To do this:

- 1 Turn off your mobile computer (if it's turned on).
- 2 Hold your mobile computer in one hand and the ThumbPad keyboard in your other hand.



***Holding your mobile computer and the ThumbPad keyboard***

- 3 Align your mobile computer with the keyboard connector, located at the top of the ThumbPad keyboard.



***Aligning your mobile computer with the keyboard connector***

- 4 Gently slide your mobile computer into the keyboard connector until you hear a “click.”

When you connect the ThumbPad keyboard to your mobile computer, your computer automatically turns on and you can begin typing.



**CAUTION:** Always use the keyboard connector as a guide when connecting and disconnecting your mobile computer to avoid possible damage to your device or the ThumbPad keyboard.

## Disconnecting the ThumbPad Keyboard

To disconnect the keyboard from your mobile computer:

- 1 Turn off your mobile computer (if it's turned on).
- 2 Gently pull your mobile computer away from the ThumbPad keyboard and slide it out of the keyboard connector.



**CAUTION:** Avoid pressing any keys on the ThumbPad keyboard when disconnecting it from your mobile computer, as doing so may cause the key to stop working.



# Using the ThumbPad Keyboard



## Typing Keyboard Shortcuts

The following table details the key sequences you can use to access options and additional characters, and to issue commands to your mobile computer from the ThumbPad keyboard.

To use these key sequences, hold down either the Ctrl, Fn, or Shift key (as indicated) and then tap the second key listed in the table for the desired result.

### US/UK Version Keyboard Combinations

	Key Sequence	Result
1	Shift + any key	Enters uppercase character
2	Caps	Toggles between all upper or lowercase characters
3	Fn + any key	Activates blue symbol on a key
4	Fn + Caps	Constant use of all blue symbols
5	Shift + ↑	Highlights line of text above cursor
6	Shift + ↓	Highlights line of text below cursor
7	Shift + →	Highlights character right of cursor
8	Shift + ←	Highlights character left of cursor

	Key Sequence	Result
9	F <sup>n</sup> + BackSpace	Del
10	F <sup>n</sup> + 	Tab
11	Ctrl + X	Cuts selected text
12	Ctrl + C	Copies selected text
13	Ctrl + S	Selects all text
14	Ctrl + D	Deletes selected text
15	Ctrl + P	Pastes cut or copied text
16	Ctrl + U	Undoes last command
17	Shift + SPACE	Activates the Hot Key menu
18	F <sup>n</sup> + Shift + key (at the same time)	Emulates the  command function
19	Shift + Enter	Moves cursor to next column in Address book
20	Ctrl + Enter	Moves cursor to previous column in Address book
21	Ctrl + Q, then release and type A, E, I, O, U, or Y	Acute accent: Á, É, Í, Ó, Ú, Ý
22	Ctrl + W, then release and type A, E, I, O, or U	Grave accent: À, È, Ì, Ò, Ù
23	Ctrl + E, then release and type A, E, I, O, or U	Circumflex: Â, Ê, Î, Ô, Û
24	Ctrl + R, then release and type A, N, or O	Tilde: Ã, Ñ, Õ
25	Ctrl + T, then release and type A, E, I, O, U, or Y	Diaeresis (Umlaut): Ä, Ë, Ì, Ö, Ü, Ý
26	Ctrl + Y, then release and type A	Nordic A-ring: Å

## Customizing the Keyboard Options

After installing the keyboard driver on your mobile computer, you can customize its options through the ThumbPad keyboard application. To do this:

- 1 Turn on your mobile computer.
- 2 Tap the **Applications** icon.

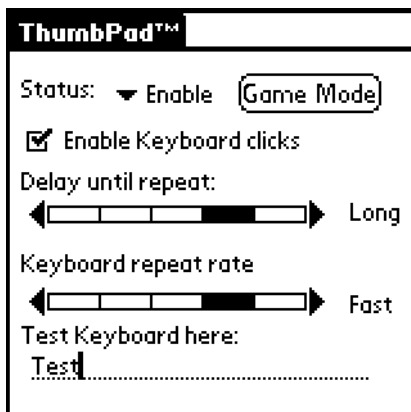
The Applications screen appears.



*Sample Applications screen*

- 3 Tap the **ThumbPad** icon.

The ThumbPad keyboard configuration screen appears.



*Sample ThumbPad keyboard configuration screen*

The available options are:

- Status — which allows the ThumbPad keyboard to work properly.

To suspend keyboard functions, tap the **drop-down arrow** and select **Disable**. To use the keyboard again, tap the **drop-down arrow** and select **Enable**.

- Game Mode — which allows you to turn Game Mode on/off and set the action of the cursor and space keys when Game Mode is active. See [“Activating Game Mode and Customizing Game Settings”](#) on page 14.

- Enable Keyboard clicks — which simulates typewriter clicking sounds when you press keys on the ThumbPad keyboard.

To hear key clicks, tap **Enable Keyboard clicks** (places a check mark in the box). To prevent key clicks, tap **Enable Keyboard clicks** again (makes the check mark disappear).

- Delay until repeat — which allows you to set the length of time before a letter, number or other character begins to repeat when you press and hold a key.

Use your stylus to move the marker arrow toward Long to increase or away from Long to decrease the length of the delay.

- Keyboard repeat rate — which allows you to set the speed at which a letter, number or other character repeats when you press and hold a key.

Use your stylus to move the marker arrow toward Fast to increase or away from Fast to decrease the repeat rate.

- Test Keyboard here: — which allows you to test the delay and repeat rate by holding down a letter or number key on the ThumbPad keyboard. The character repeats according to the settings you have chosen. Change and test these settings until you achieve the desired outcome.

## Activating Game Mode and Customizing Game Settings

When Game Mode is active, all keys, except the cursor and space keys, are disabled. This allows you to use the cursor and space keys like a “joystick” while playing games on your mobile computer. You can also customize the action of cursor and space keys from the Game Setting screen.



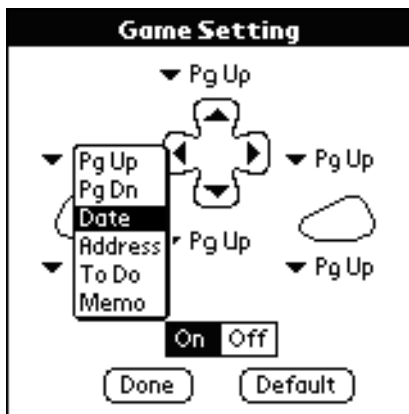
**NOTES:** Key commands vary between games. Check the instructions that came with your game to determine which command will provide you with the action you want to perform.

The keyboard driver must be enabled in order to use Game Mode

To turn Game Mode on/off:

- 1 From the Applications screen, tap the **ThumbPad** icon.
- 2 Tap **Game Mode**.

The ThumbPad keyboard Game Setting screen appears.



*Sample ThumbPad keyboard Game Setting screen*

- 3 Tap **On** to activate or **Off** to deactivate Game Mode.

To customize Game Settings:

- 1 From the Game Setting screen, choose the key you want to assign, then tap on the **drop-down arrow**.
- 2 Select the action you want performed when the key is pressed in Game Mode.

For example, if the game you are playing defines the Date button on your mobile computer as “jump,” you can customize any cursor or space key to simulate the Date button

and that key will perform the “jump” action when pressed in Game Mode.

- 3 Repeat steps 1 and 2 to assign actions to other keys.
- 4 To save your changes and close the window, tap **Done**.

To reset the Game Settings to the factory preset values, click **Default**.



NOTE: When Game Mode is on, your mobile computer will only respond to the cursor and space keys on the ThumbPad keyboard. To restore normal operation, turn off Game Mode.

## Troubleshooting

**What should I do when I type on the keyboard and nothing happens?**

- Check that your mobile computer is charged.
- Make sure that your mobile computer is firmly connected to the ThumbPad keyboard.
- Verify that the keyboard driver is installed on your mobile computer.
- Remove the keyboard driver and then reinstall it. To do this:
  - 1 Tap the **Applications** icon, then the **Menu** icon.
  - 2 Tap **App**, **Delete**, **ThumbPad** and then the **Delete...** on-screen button.



The Delete Application window appears.

- 3 Tap **Yes** to remove the keyboard driver, or **No** to cancel the operation.
- 4 Tap **Done** to exit the Delete window.
- 5 Install the driver software, following the instructions in “[Installing the Keyboard Driver](#)” on page 3.

### Does the ThumbPad Portable Keyboard require batteries?

No — the keyboard uses a only a small amount of power, which it draws directly from your mobile computer.

### What should I do when I type on the keyboard and the HotSync® application begins?

Make sure that the keyboard is firmly attached to your mobile computer, then close HotSync by tapping **Cancel** (this may take a few seconds) and resume typing.

## Technical Support

In the unlikely event that you encounter a problem with your Targus accessory, please contact our technical support team at:

Email: [techsupport@targus.com](mailto:techsupport@targus.com)

Internet: <http://www.targus.com/support>

Our knowledgeable staff is also available to answer your questions through one of the following telephone numbers.

## North America

Monday through Friday, 8:00 a.m. (08:00) to 8:00 p.m. (20:00) Eastern time:

US & Canada 800-283-6325

## Europe

Belgium	+32 0 02-717-2451
Denmark	+45 0 35-25-8751
France	+33 0 1-64-53-9151
Germany	+49 0 21-16-579-1151
Italy	+39 0 24-827-1151
Netherlands	+31 0 53-484-9470
Spain	+34 0 91-745-6221
Sweden	+46 0 8-751-4058
Switzerland	+41 0 1-212-0007
United Kingdom	+44 0 20-7744-0330
Eastern Europe & others	+31 0 53-484-9479

## Product Registration

For more efficient customer service and to activate the product's warranty, Targus recommends that you register your Targus accessory shortly after purchasing it.

To register your Targus accessory, go to:

<http://www.targus.com/registration.asp>

You will need to provide your full name, email address, phone number, and company information (if applicable).

## Warranty

Targus warrants this product to be free from defects in materials and workmanship for one year. If your Targus ThumbPad Portable Keyboard is found to be defective within that time, we will promptly repair or replace it. This warranty does not cover accidental damage, wear and tear, or consequential or incidental loss. Under no conditions is Targus liable for loss of, or damage to, a computer; nor loss of, or damage to, programs, records, or data; nor any consequential or incidental damages, even if Targus has been informed of their possibility. This warranty does not affect your statutory rights.

Warranty Registration at:

<http://www.targus.com/registration.asp>

## Regulatory Compliance

This device complies with Part 15 of the FCC Rules. Operation is subject to the following two conditions: (1) This device may not cause harmful interference, and (2) This device must accept any interference received, including interference that may cause undesired operation.

## FCC Statement

### Tested to Comply

This equipment has been tested and found to comply with the limits of a Class B digital device, pursuant to Part 15 of the FCC Rules. These limits are designed to provide reasonable protection against harmful interference in a residential installation. This equipment generates, uses, and can radiate radio frequency energy and if not installed and used in accordance with the instructions, may cause harmful interference to radio communications. However, there is no guarantee that interference will not occur in a particular installation.

If this equipment does cause harmful interference to radio or television reception, which can be determined by turning the equipment off and on, the user is encouraged to try to correct the interference by one or more of the following measures:

- Reorient or relocate the receiving antenna
- Increase the separation between the equipment and receiver
- Move the computer away from the receiver
- Connect the equipment into an outlet on a circuit different from that to which the receiver is connected.

ThumbPad is a trademark of Darfon Electronics Corp. Windows is a registered trademark of Microsoft Corporation. Macintosh is a registered trademark of Apple Computer, Inc. HotSync is a registered trademark of Palm Inc. All other trademarks are the property of their respective owners.



**TARGUS**

*Essential Accessories for Mobile Computing*

**Making Your Mobile Life Easier.**

Visit our Web site at: [www.targus.com](http://www.targus.com)

*Features and specifications are subject to change without notice. © 2002 Targus Corp.*

400-0060-001B

BRUSSELS HANNOVER BARCELONA TOKYO MILANO AMSTERDAM SINGAPORE